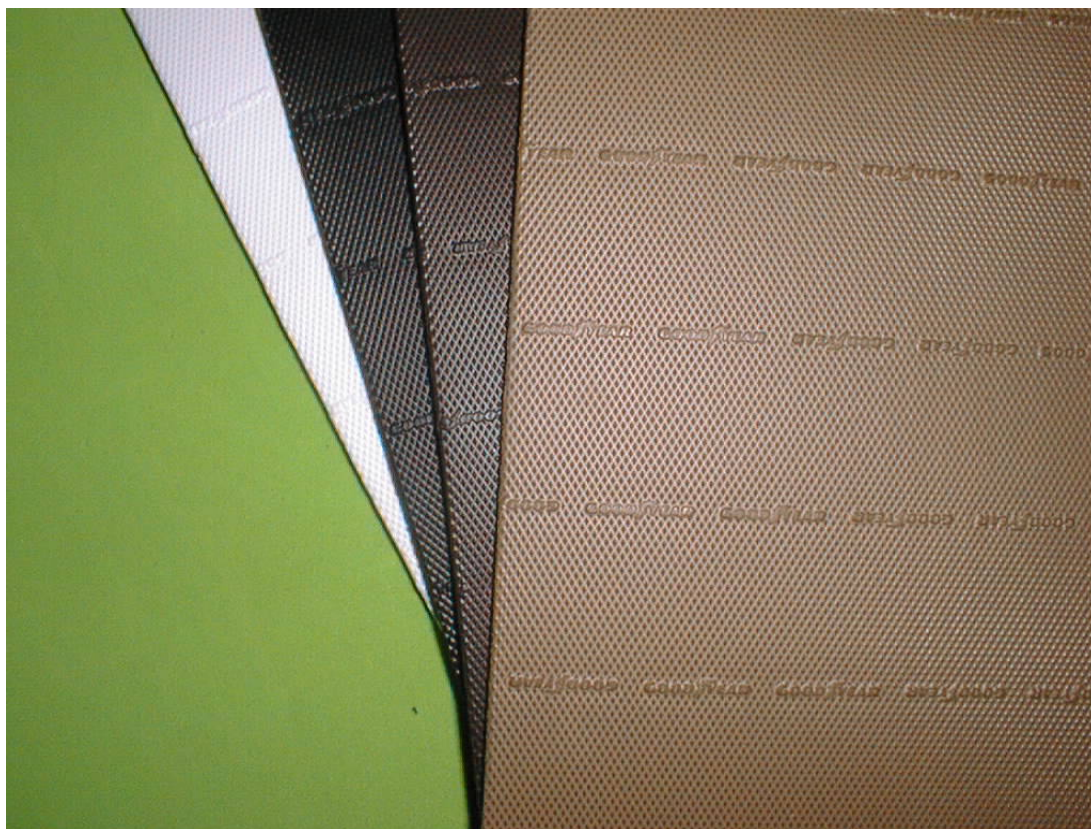




CREPE SHEETS WITH DIAMOND PATTERN



Item#:	459-1000	12ir	459-1015	24ir
	459-1005	18ir	459-1020	30ir
	459-1010	21ir		

Category: CELLULAR / LIGHTWEIGHT SHEETS (4.6)
Applications: ORTHOPEDIC BUILDUP, OUTSOLE REPLACEMENT

Features:

- ✓ Flexisoft oil resisting compound
- ✓ Durable, yet very lightweight
- ✓ Goodyear Logos

Sizes: 19" x 38"

Thickness: 12, 18, 21, 24, 30 Iron

Colors:

12, 24ir :	Black, Brown, White, Camel
18ir :	Black, Brown, Camel
21, 30ir :	Black, Brown

Standard Formulation: Flexisoft

Case Pack: 4 sheets

Fitday Enterprise Ltd. is the licensee of Goodyear Shoe Products in North America and Asia.

Customer Service (USA) Tel: 941-475-5561

Asia Contact (Taiwan): Tel: 886-4-2387-1999

Fax: 941-475-5349

Fax: 886-4-2387-1989